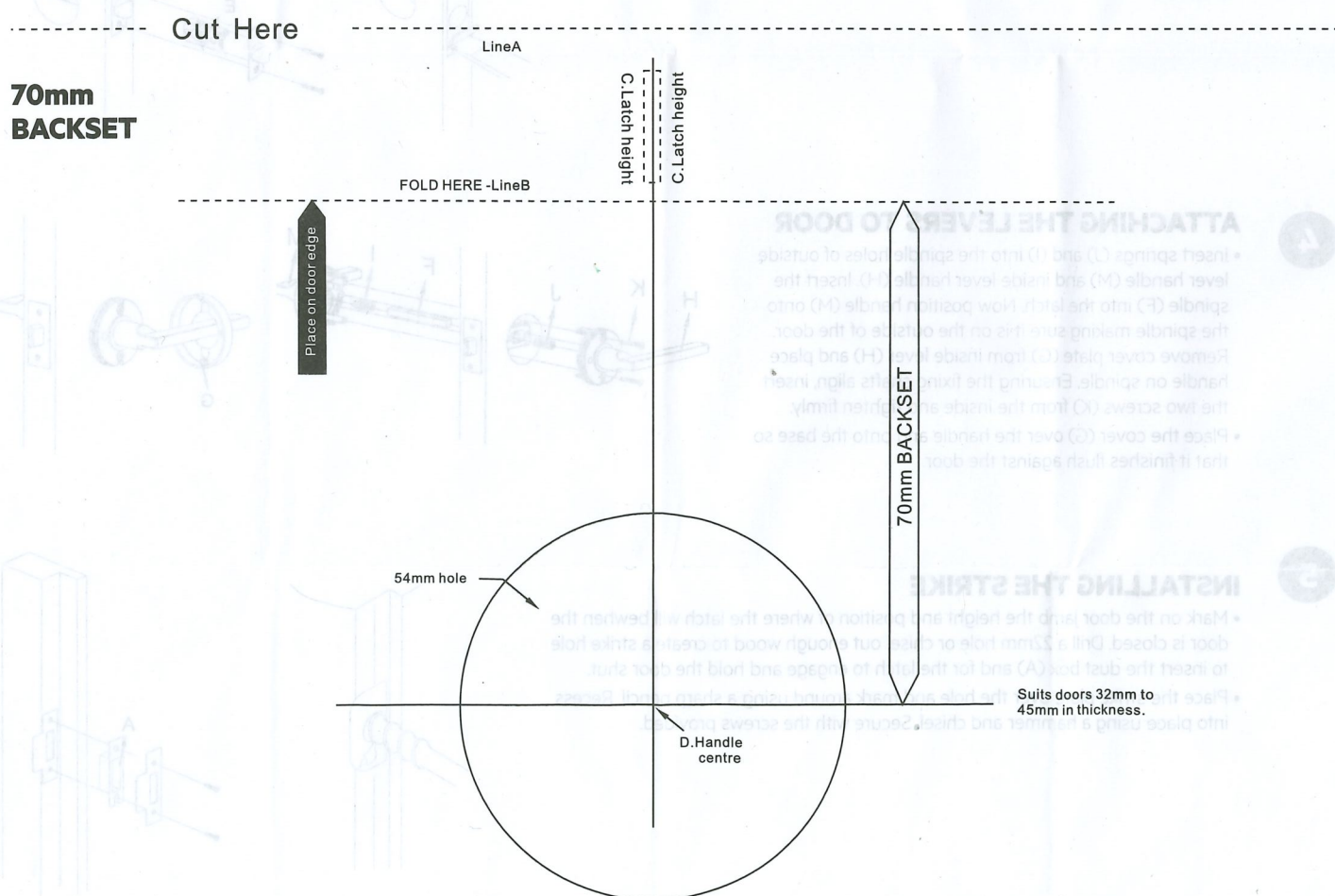
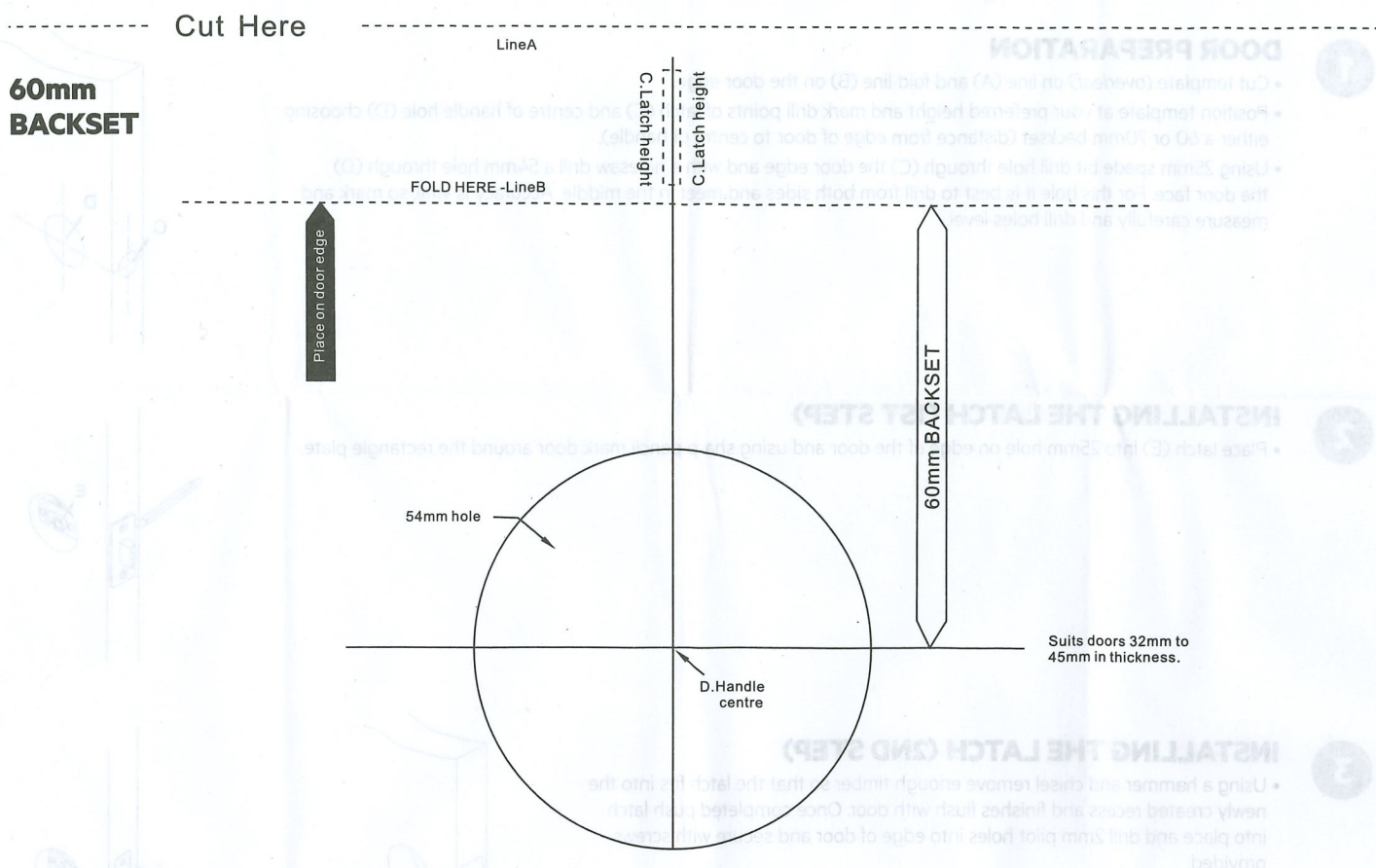


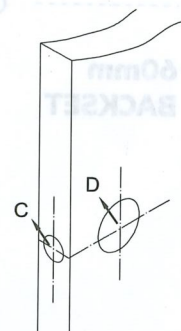
S Range Passage Set Installation Template



S Range Passage Set Installation Instructions

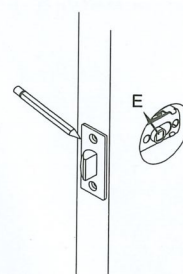
1 DOOR PREPARATION

- Cut template (*overleaf*) on line (A) and fold line (B) on the door edge.
- Position template at your preferred height and mark drill points of latch (C) and centre of handle hole (D) choosing either a 60 or 70mm backset (distance from edge of door to centre of handle).
- Using 25mm spade bit drill hole through (C) the door edge and with a holesaw drill a 54mm hole through (D) the door face. For this hole it is best to drill from both sides and meet in the middle. Accuracy is vital, so mark and measure carefully and drill holes level.



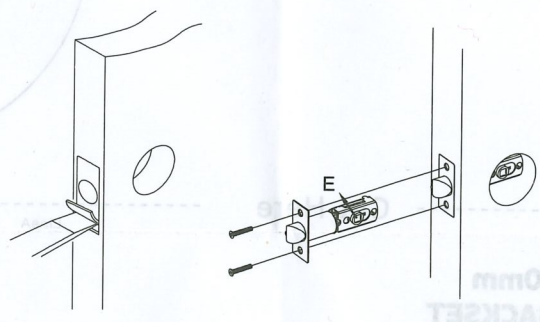
2 INSTALLING THE LATCH (1ST STEP)

- Place latch (E) into 25mm hole on edge of the door and using sharp pencil mark door around the rectangle plate.



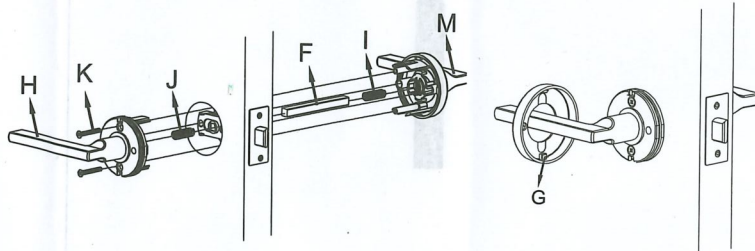
3 INSTALLING THE LATCH (2ND STEP)

- Using a hammer and chisel remove enough timber so that the latch fits into the newly created recess and finishes flush with door. Once completed push latch into place and drill 2mm pilot holes into edge of door and secure with screws provided.



4 ATTACHING THE LEVERS TO DOOR

- Insert springs (J) and (I) into the spindle holes of outside lever handle (M) and inside lever handle (H). Insert the spindle (F) into the latch. Now position handle (M) onto the spindle making sure it is on the outside of the door. Remove cover plate (G) from inside lever (H) and place handle on spindle. Ensuring the fixing shafts align, insert the two screws (K) from the inside and tighten firmly.
- Place the cover (G) over the handle and onto the base so that it finishes flush against the door.



5 INSTALLING THE STRIKE

- Mark on the door jamb the height and position of where the latch will be when the door is closed. Drill a 22mm hole or chisel out enough wood to create a strike hole to insert the dust box (A) and for the latch to engage and hold the door shut.
- Place the strike plate over the hole and mark around using a sharp pencil. Recess into place using a hammer and chisel. Secure with the screws provided.

